

333 Perth Road

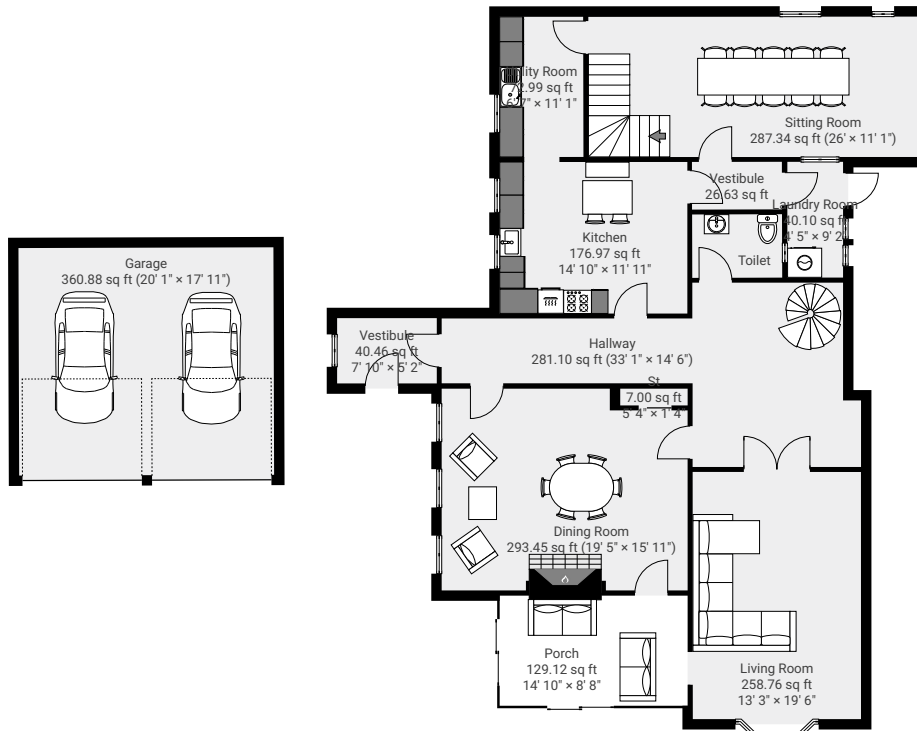
333 Perth Road, Dundee, DD2 1LQ

TOTAL AREA: 3878.62 sq ft • LIVING AREA: 3138.29 sq ft • FLOORS: 3



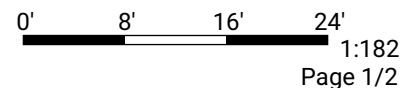
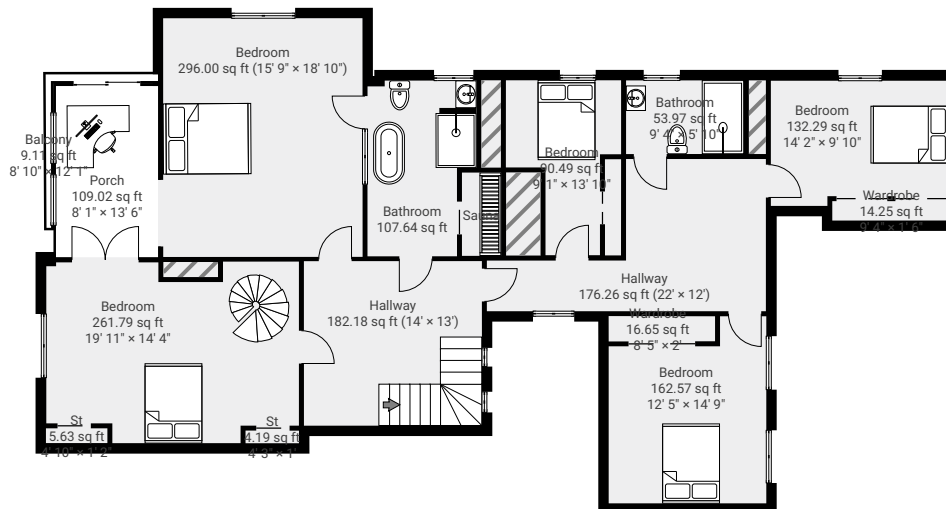
▼ Ground Floor

TOTAL AREA: 2009.31 sq ft • LIVING AREA: 1519.35 sq ft •



▼ 1st Floor

TOTAL AREA: 1651.02 sq ft • LIVING AREA: 1400.66 sq ft •



333 Perth Road

333 Perth Road, Dundee, DD2 1LQ

TOTAL AREA: 3878.62 sq ft • LIVING AREA: 3138.29 sq ft • FLOORS: 3



▼ 2nd Floor

TOTAL AREA: 218.29 sq ft • LIVING AREA: 218.29 sq ft •

