

13 Potters Park

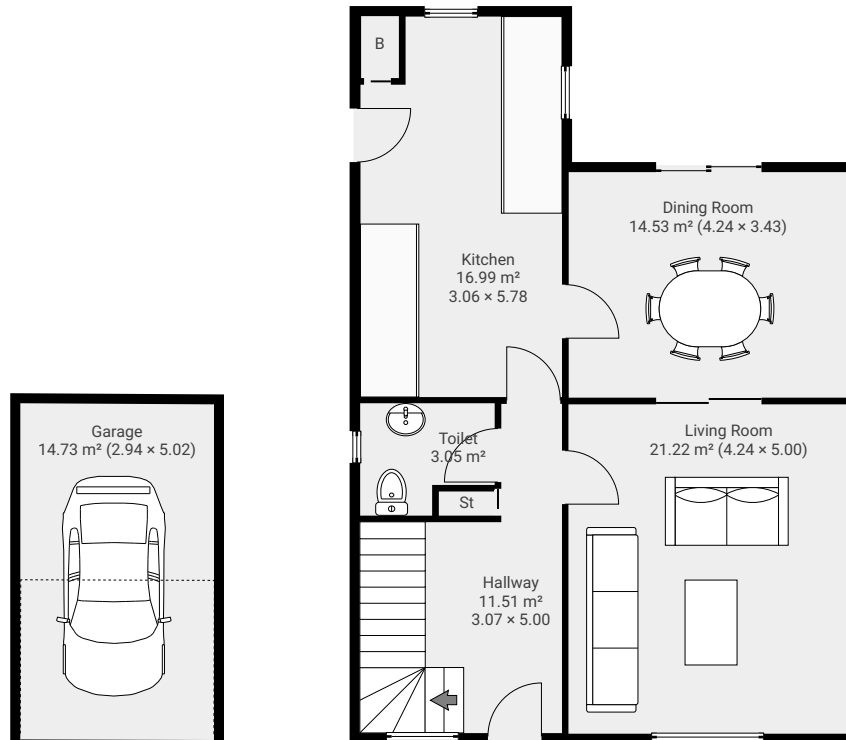
13 Potters Park, Forfar, DD8 1JL

TOTAL AREA: 141.73 m² • LIVING AREA: 127.00 m² • FLOORS: 2



▼ Ground Floor

TOTAL AREA: 82.82 m² • LIVING AREA: 68.09 m² •



▼ 1st Floor

TOTAL AREA: 58.91 m² • LIVING AREA: 58.91 m² •

