

10 Westhall Terrace

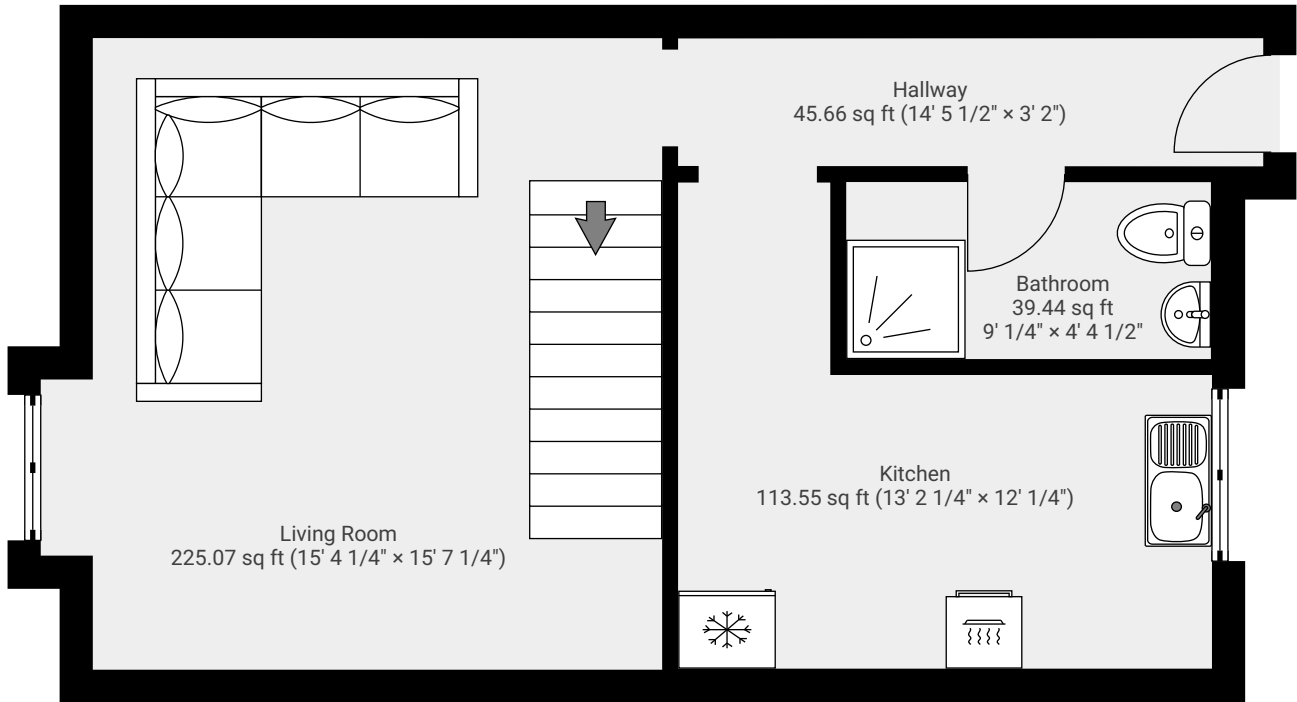
10 Westhall Terrace, Dundee, DD4 0SN

TOTAL AREA: 873.99 sq ft • LIVING AREA: 873.99 sq ft • FLOORS: 2

VERDALA

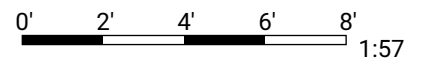
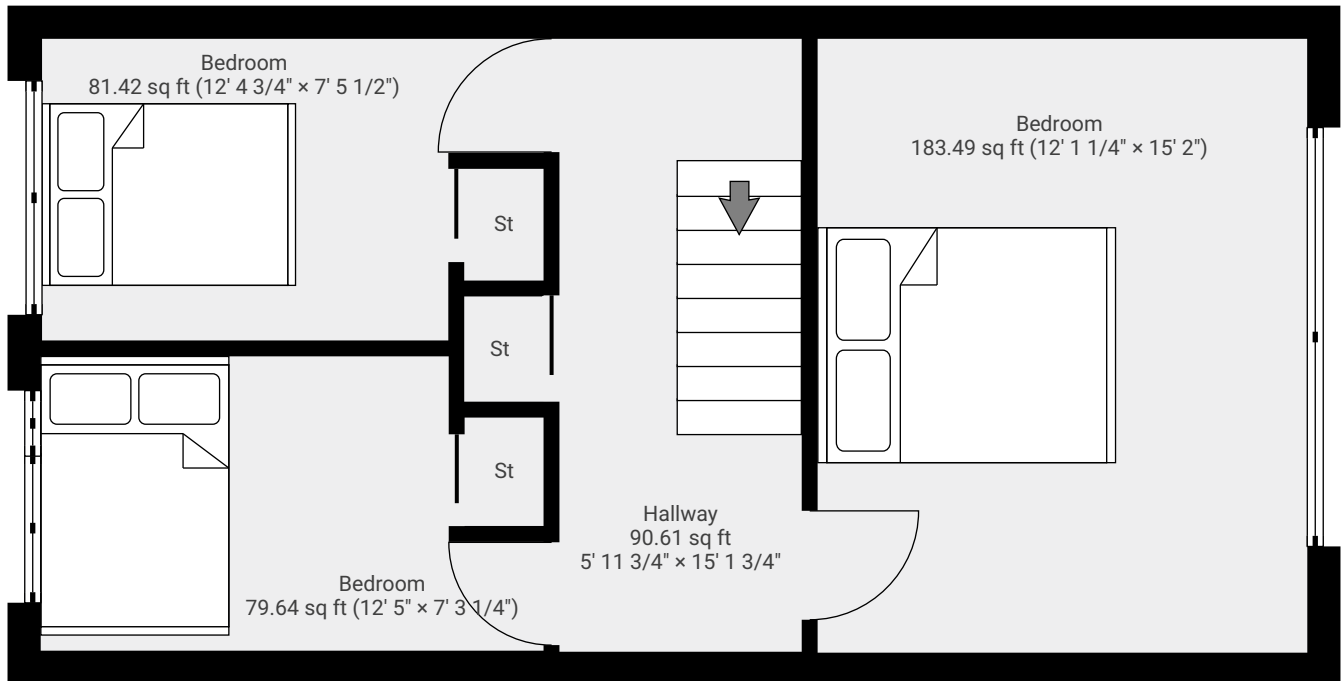
▼ 1st Floor

TOTAL AREA: 423.45 sq ft • LIVING AREA: 423.45 sq ft •



▼ 2nd Floor

TOTAL AREA: 450.53 sq ft • LIVING AREA: 450.53 sq ft •



1:57

Page 1/1