

CUPA HEAVY 3 OR EQUIVALENT NATURAL ROOFING SLATES + ZINC RIDGE WITH CAST ALUMINIUM HALF ROUND GUTTERS + CIRCULAR DOWNPIPES, COLOUR BLACK, VELUX OR EQUIVALENT TOP HUNG/ FIXED ROOF WINDOWS, COLOUR BLACK WITH PROPRIETARY FLASHING KITS SUITABLE FOR NATURAL SLATES.

STAINLESS STEEL TWIN WALLED FLUE POWDER COATED, COLOUR BLACK, SERVING DEFRA APPROVED EXEMPT SOLID FUEL COMBUSTION APPLIANCE WITH POINT OF DISCHARGE AT LEAST 4.5M ABOVE THE TOP OF THE APPLIANCE IN ACCORDANCE WITH THE GUIDANCE OF THE BFCMA.



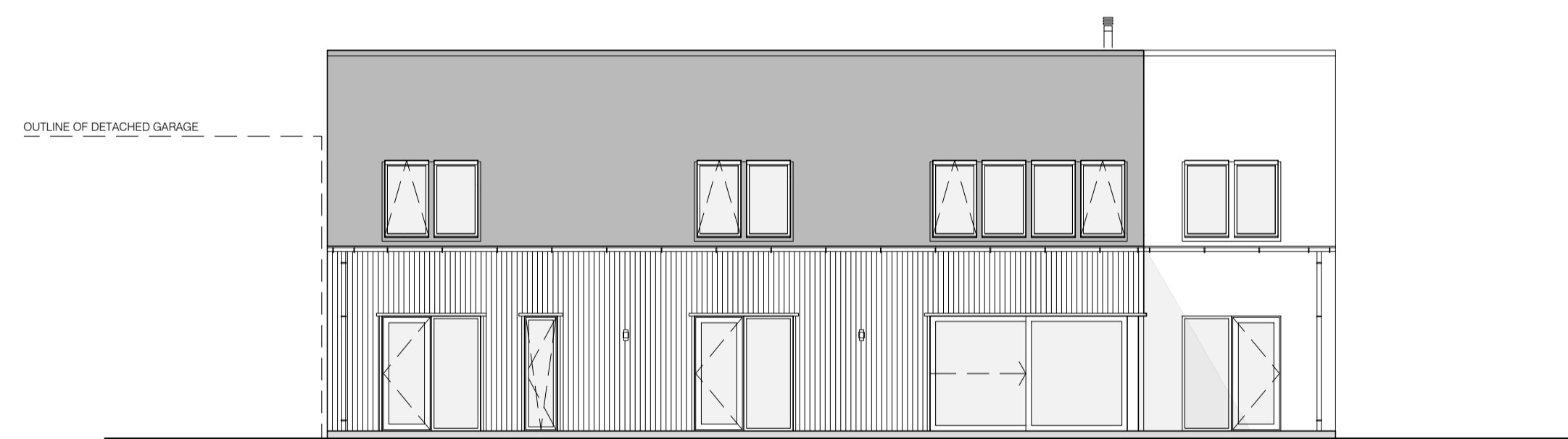
**NORTH ELEVATION**  
 Scale 1:100

K-REND OR EQUIVALENT THIN COAT SILICONE RENDER, COLOUR LIMESTONE WHITE OR RUSSWOOD OR EQUIVALENT SIBERIAN OR SCOTTISH LARCH OPEN JOINTED VERTICAL NATURAL TREATED TIMBER CLADDING BOARDS OVER IBSTOCK OR EQUIVALENT WIRECUT SMOOTH BLACK BRICK WITH BLACK MORTAR.

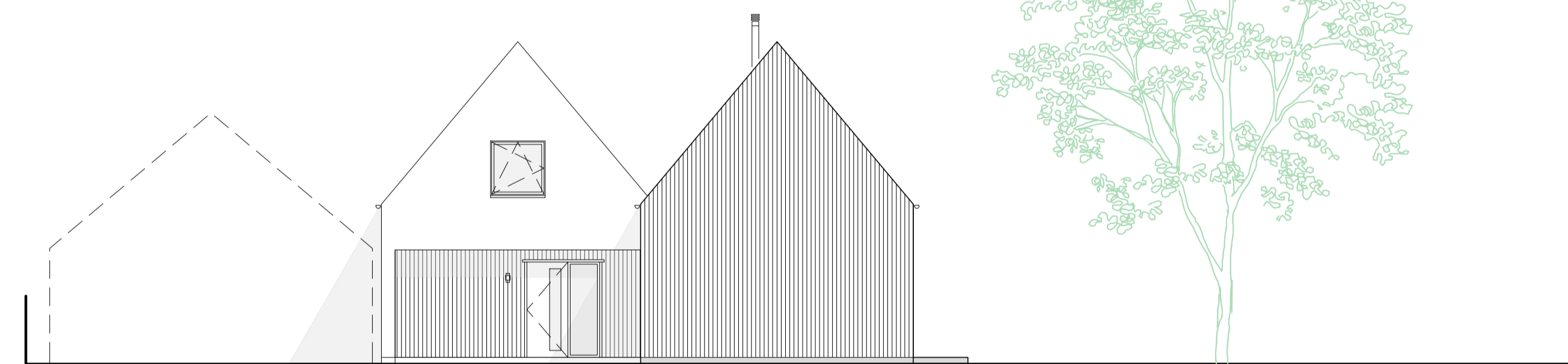
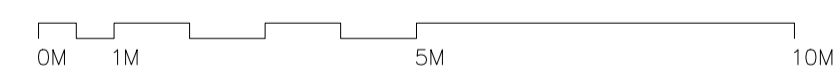
PVCU HIGH EFFICIENCY DOUBLE GLAZED WINDOWS/ SLIDING DOORSETS WITH SAFETY GLASS TO BS 6262; PART 4; 2005, COLOUR BLACK BOTH INTERNALLY AND EXTERNALLY WITH INTEGRAL SLOT TRICKLE VENTILATORS FITTED IN THE HEAD OF THE FRAMES. COMPOSITE HIGH EFFICIENCY EXTERNAL DOORSETS, COLOUR BLACK WITH OBSCURE DOUBLE GLAZED VISUAL PANELS.



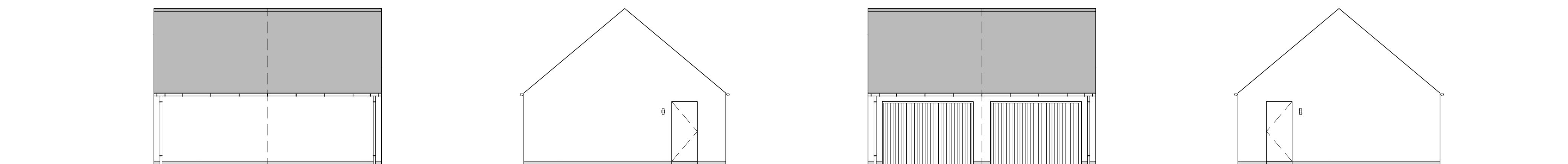
**EAST ELEVATION**  
 Scale 1:100



**SOUTH ELEVATION**  
 Scale 1:100



**WEST ELEVATION**  
 Scale 1:100



**NORTH EAST SOUTH + WEST ELEVATIONS**  
 Scale 1:100

